

## FITTING INSTRUCTIONS V-8013

### ● Fitting instructions

Prior to fitting familiarise yourself with its simple action.

**Caution:** Before drilling or fitting screws check position of glass and seals.

1. Close window mark intersecting centre lines on the vertical and horizontal frames. Carefully drill a 10mm (3/8") dia. Hole, 70mm (2 3/4") deep through both frames. Hole depth can be marked on drill bit with tape. Ensure drill is level and straight. (Fig 1)

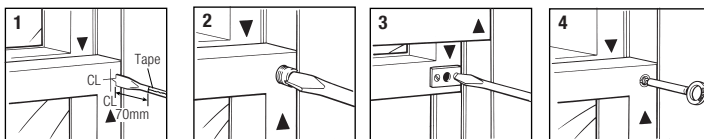
2. With locking bolt removed screw barrel into inner frame until it is flush. On hardwood windows lubricate thread with wax/soap for easier fitting. (Fig 2)

3. Open window to gain access to hole in outer frame then position locking plate centrally over the hole. Mark and prepare fixing holes and secure to the frame. (Recess into frame if necessary/required). (Fig 3) **Do not overtighten**

4. Close window and insert bolt into barrel then secure into place with key ensuring that bolt head is below the surface. (Fig 4)

**NB.** Equivalent imperial sizes are approximate

Do not use abrasive cleaners, solvents or polish. Only use a moist cloth.



**The world's favourite lock**

[www.yale.co.uk](http://www.yale.co.uk) E-mail: [locksinfo@yale.co.uk](mailto:locksinfo@yale.co.uk)