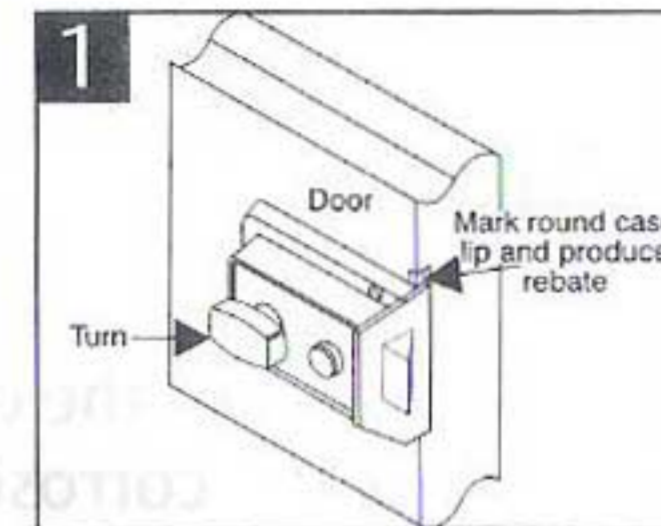


Fitting Instructions

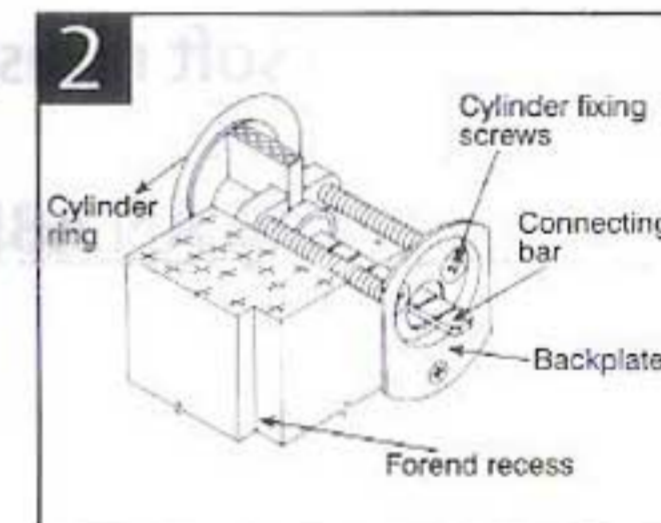
Step 1: Prepare the inside of the door

- Draw a line on the inside of the door to represent the top edge of the latch case.
- Fold the template and position its top edge to this line. Mark drill hole centre.
- Ensure the right side of the template is used.
- Drill a 35mm diameter hole through the door.
- Prepare the fixing screw hole with a bradawl or drill.
- Position the latch case up to the marked line, now mark round the case lip and chisel out the door to enable snug fitment.



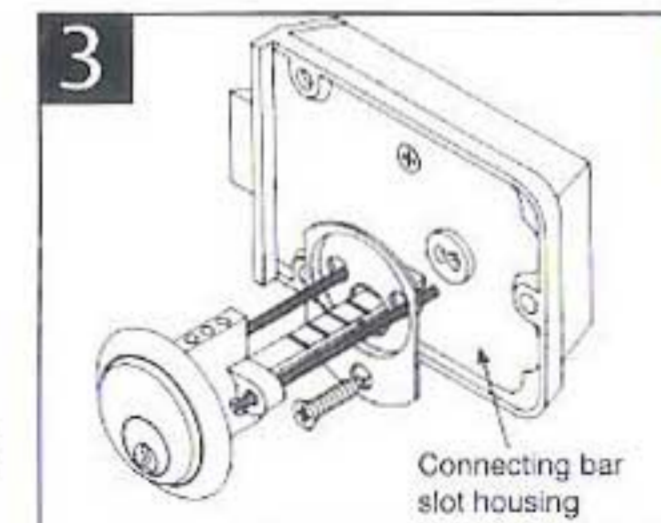
Step 2: Prepare and fit the cylinder

- Position the cylinder complete with ring into the door and shorten the cylinder connecting bar by snapping it off with a pair of pliers; make sure that it protrudes 6.5mm beyond the inside of the door for correct operation.
- Assemble the cylinder to the door with backplate and screws.



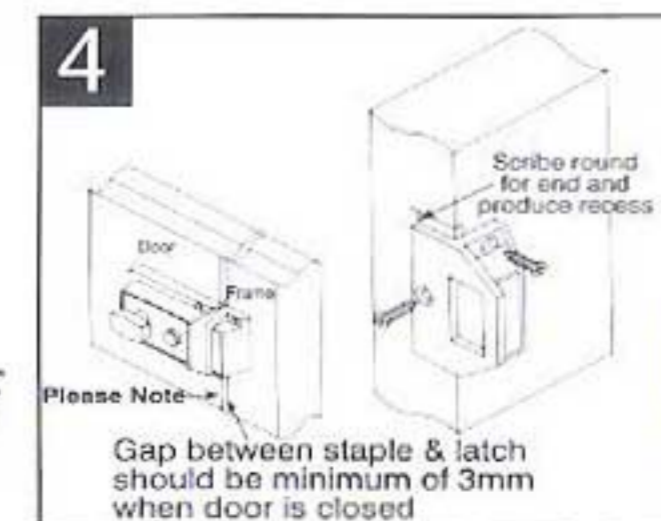
Step 3: Fitting the latch case

- Before fitting the latch ensure the bolt is not held back in the case
- Position the latch case on door with the cylinder connecting bar engaged in the bar slot. Fix the latch case with the screws supplied
- Check the latch operation with the key and knob from the inside.



Step 4: Fitting the staple

- Align on jamb/frame directly opposite the latch.
- Mark round the staple lip and produce a recess that lines up with the latch.
- The gap between the staple and the latch should be a minimum of 3mm when the door is closed.
- Fix staple with screws supplied.



Fitting & Operating Instructions

ASSA ABLOY, SA

176 Progress Road
Technikon,
Roodepoort, 1724
PO Box 146
Roodepoort, 1725

Tel: +27 11 761 5000
Fax: +27 11 766 3570

za.info@assaabloy.com
www.assaabloy.co.za

ASSA ABLOY, the global leader
in door opening solutions.

ASSA ABLOY